



DESIGN DIRECTORY 2010

Age rarely gets in the way of good design. For this year's Architects Directory, we sought out the world's hottest young practices, who each devised a conceptual home to make clear their M.O. Meanwhile, furniture by the elder statesman of midcentury design, nonagenarian Jens Risom, is back by popular demand, and vintage classics are inspiring the next generation of interior pioneers. Here's the year's best design.

060 Architects Directory

068 Jens Risom reissued

106 Screen debut

The W* House

073 Living room

077 Dining room

081 Outdoor

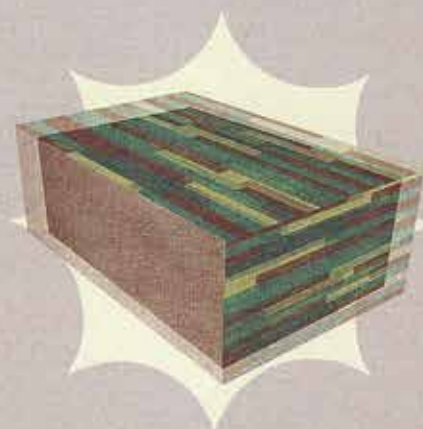
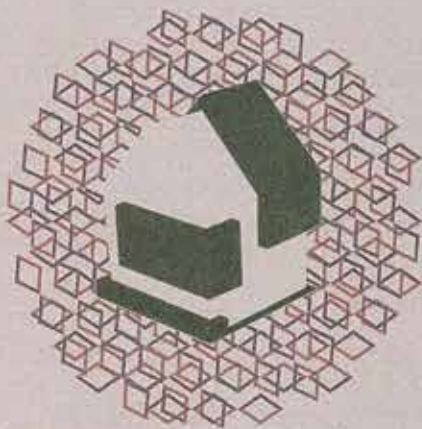
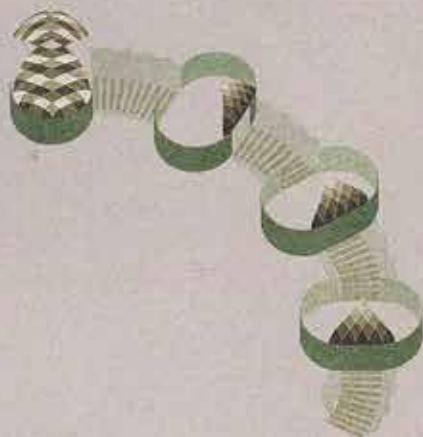
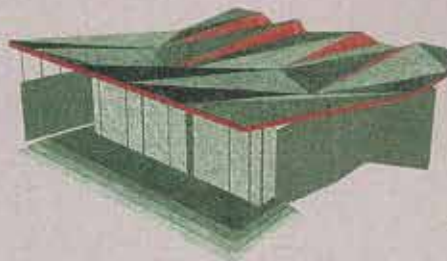
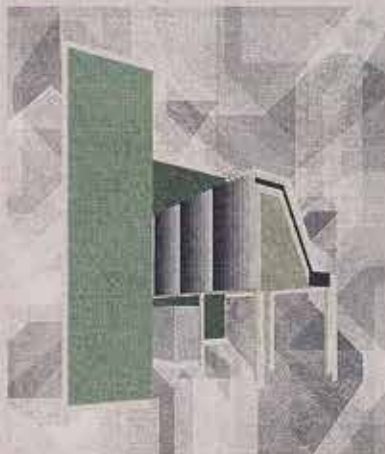
085 Bedroom

089 Hallway

091 Study

095 Bathroom

099 Kitchen



OWEN AND VOKES
AUSTRALIA

www.owenandvokes.com

Paul Owen and Stuart Vokes established their Brisbane practice in 2003 and work mostly in the context of Australian suburbia. Their country house design, Pompom Farmhouse, is outlined by a series of masonry walls, which mark out its territory. These walls, low tech and simple, create spaces for all the necessary functions, from living and resting to gardening and outdoor living. The structure is intended to be light, modular and factory-constructed, but also fully informed by the surrounding landscape in terms of its orientation and shape.

HEIN-TROY
AUSTRIA

www.hein-troy.at

Matthias Hein and Juri Troy established separate practices in Bregenz in 2002 and Vienna in 2003 respectively. Although they maintain their own offices, in 2006 they merged to form Hein-Troy. Sited in a cornfield in Anif, equidistant between the architects' two offices, Staggered House is made up of a combination of open and closed spaces. Covered by climbing plants, which transform the house into a living green sculpture, the open part acts as a skylight in winter, allowing light to come in, and as shade in summer, protecting the interior from the sun.

DIETER JANSSEN
CANADA

www.dieterjanssen.com

Dieter Janssen has been the director of his Toronto-based studio, DJA, since 1999. Set on a breathtaking location at the edge of Lake Erie, Janssen's Second Sky house features a wavy roof, prompting a play of light and shadow inside. The building uses a green roof water system, reclaimed components sourced from condominium sales centres, and recycled materials from a nearby quarry. The lightweight structure's interior layout is as simple as it gets, with two partition walls, also doubling as storage space, defining the house's main areas.

JOSÉ ULLOA DAVET AND DELPHINE DING
CHILE

jud-arq.blogspot.com; www.delphineding.com

José Ulloa Davet and Delphine Ding have collaborated since 2007 and divide their time between Santiago, Barcelona and Switzerland. Their design for us, Temporary Social Cells For Emergency, is intended for use following a disaster, such as the earthquakes to which Chile is prone. A hostel for up to seven families is constructed from a basic unit that includes cells for common uses, such as bathrooms, kitchens and living areas. Low cost, easily deployable and able to preserve social structures in a time of crisis, TSCFE is both poetic and functional.

CARSON & CRUSHELL
IRELAND

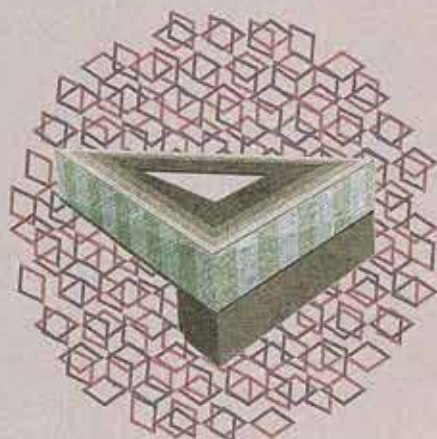
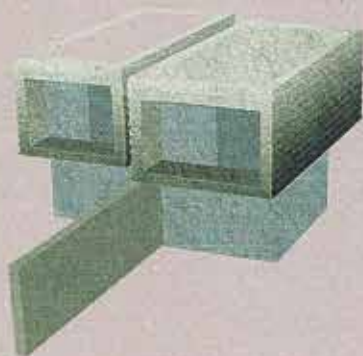
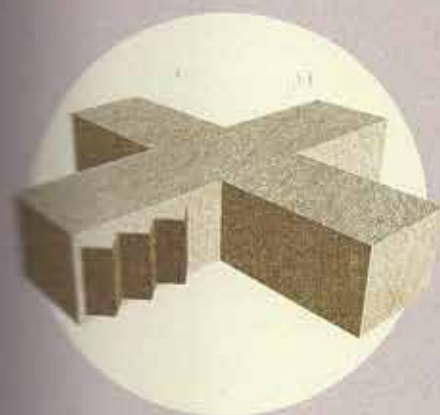
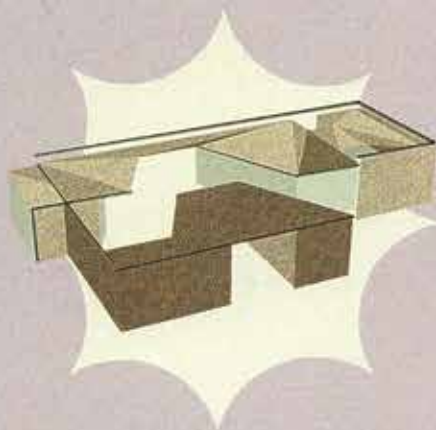
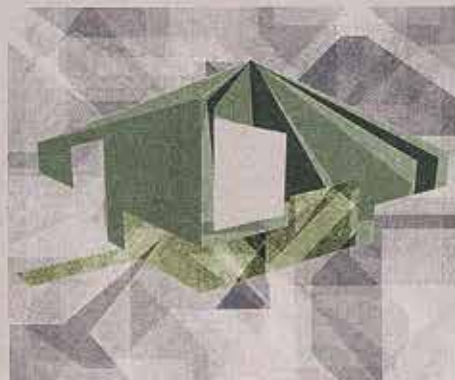
www.carsonandcrushell.com

Douglas Carson and Rosaleen Crushell set up their Dublin practice in 2003 following their graduation from University College Dublin. With their ccOracle for the Future, the architects redesigned the classic canalboat to combine the benefits of city living with the opportunity for rural escape. The clever design is planned to conserve heat (the structure is lined with fibreglass, tatami matting and wool rugs) and ease travel (the boat's hubs are linked by tunnels that flex and bend as it moves); it also features hidden storage space and multifunctional areas.

AXELROD ARCHITECTS
ISRAEL

www.axelrodarchitects.com

Axelrod was established in 2000 by Irit Axelrod and has offices in Tel Aviv and San Francisco. Unfolding House is a clean, cubic steel and glass structure, with a simple and flexible interior: an open plan with only one permanent partition and two sliding walls, which divide the house's 100 sq m into a two-bedroom house. The structure's steel skin is applied as a second layer, over the main glass one, allowing for internal climate control, while the external panels can be folded or unfolded, making the house easily adaptable and responsive to the owner's needs.



HARALD THAULOW
NORWAY

www.aasthaulow.no

Photographer-turned-architect Atle Aas teamed up with Harald Thaulow to establish their Oslo practice last year. Hill House, located in a beautiful spot, on a steep slope overlooking the Haldres Valley, north of Oslo, is a simple orthogonal structure with one door and one window. Built from, and heated by, locally sourced, renewable materials, it's made of solid wood, using low-grade timber that would otherwise go to waste. Only the foundation and basement is dry masonry, making use of the existing stones found on the site.

JUAN SUÑEZ SANTAS

SPAIN
www.juanesantas.com

Juan Suárez Mansilla and Asier Santos Torres, graduates of the University of Navarra School of Architecture, established their firm in Bilbao in 2003, and have already received awards from more than 15 national and international competitions. X House, located in northern Spain on a Biscay cliff top facing the Cantabrian Sea, is blessed with stunning views, of which the architects took full advantage. Designed to highlight the link between architecture and its user, the house is low, graphic and horizontally oriented, opening up in all directions.

FREI + SAARINEN
SWITZERLAND

www.freisaarinen.ch

Barbara Frei and Martin Saarinen worked for practices such as Erick van Egeraat and Herzog & de Meuron before setting up on their own in Zürich in 2003. For us, Frei and Saarinen chose to work on a farmhouse, Rural House, confronting the challenges and potential of sharing a home with livestock. Integrating the animals' presence into the house design, they used cows' body warmth to help heat the rooms. The house was seen as 'a domesticated piece of nature', working to reinforce the inhabitants' natural experience, but it is also, primarily, a piece of art.

EDGLEY DESIGN

UK
www.edgleydesign.co.uk

Architectural Association graduate Jake Edgley set up his London practice in 2004 and has built up a strong portfolio of residential commissions. Designed for a location in Wiltshire, UK, Plane House's absence of window frames accentuates its openness, giving the impression of a ground floor united with the scenery. Placing kitchen and dining areas to the east and living spaces to the west makes the most of the garden views. The house is designed to be fully self-built using local materials, and it can be adapted to different sites and scales.

MOTO DESIGNSHOP
US

www.motodesignshop.com

University of Pennsylvania graduates Adam Montalbano and Roman Torres established their multi-disciplinary firm in Philadelphia in 2003. Designed as an artist's retreat, Cocoon House was conceived as two structures that intertwine, creating a spatial dialogue. The structure features a wooden screen, which can be pulled away from the house, revealing the shoreline location's expansive views (and at the same time creating a shaded parking spot). The screen can then be pulled back when the owners are away, protecting the house when not in use.

ZOKA ZOLA

US
www.zokazola.com

Croatian Zoka Zola, a Zagreb University and Architectural Association graduate, set up practice in Chicago in 2002. Scalene House was designed with the playful use of the number three in mind; it sits on three columns, which hold three beams that hold three slabs. A triangular-shaped courtyard springs from the slabs' arrangement. The house sits lightly on the ground and the load-bearing columns allow for a light and free interior. Open to all directions, the structure also gets additional exposure to light and air via the courtyard.